



SIEMENS

Desigo CC Graphics Documentation Tool

[siemens.com](https://www.siemens.com)

General information

Änderungsnachweis

Version	Date	Author	Remark
1.0	January 2019	Peter Schaefer RC-DE SI RSS-DE SSP COC-SOL	Document created
1.2	March 2019	Peter Schaefer RC-DE SI RSS-DE SSP COC-SOL	Extension V4
1.3	February 2021	Peter Schaefer RC-DE SI RSS-DE SSP COC-SOL	New template and enhancements V5
1.4	November 2021	Peter Schaefer RC-DE SI RSS-DE SSP COC-SOL	New Features <ul style="list-style-type: none">- Add Landscape- Add Object Model for Data Point- Add Orphaned Graphic Objects- Add Selection Main View

Use

Target group and purpose

With this extension, a powerful and easy-to-use tool is available, with which e.B. reports on the project and the graphics and data points contained therein can be automatically generated as part of acceptances.

The tool was developed by the German BT organization.

It is part of the installation of Desigo CC and can be accessed in the Windows Start menu under "Graphic Docu Tool". The tool accesses the Desigo CC database online and requires legitimation via a Desigo CC user with admin rights. A client license is required during operation.

After starting, the tool reads all graphic pages contained in the project, which can then be selected individually or as a whole.

Scope and scope (delimitation)

This document describes the current version of Desigo CC Graphics Documentation Tool which was only introduced in the German market.

Definitions, terms, abbreviations

Links: Links to other documents are marked in blue.

Example: Illustrated examples are shown in italics.

Abbreviations: Or ... Optional, P ... Duty I ... Information



Attention!



Hints!



Info!



AMEV



CAUTION

Country-specific safety regulations

Failure to comply with country-specific safety regulations can lead to personal injury and property damage.

Comply with country-specific regulations and comply with the appropriate security guidelines.

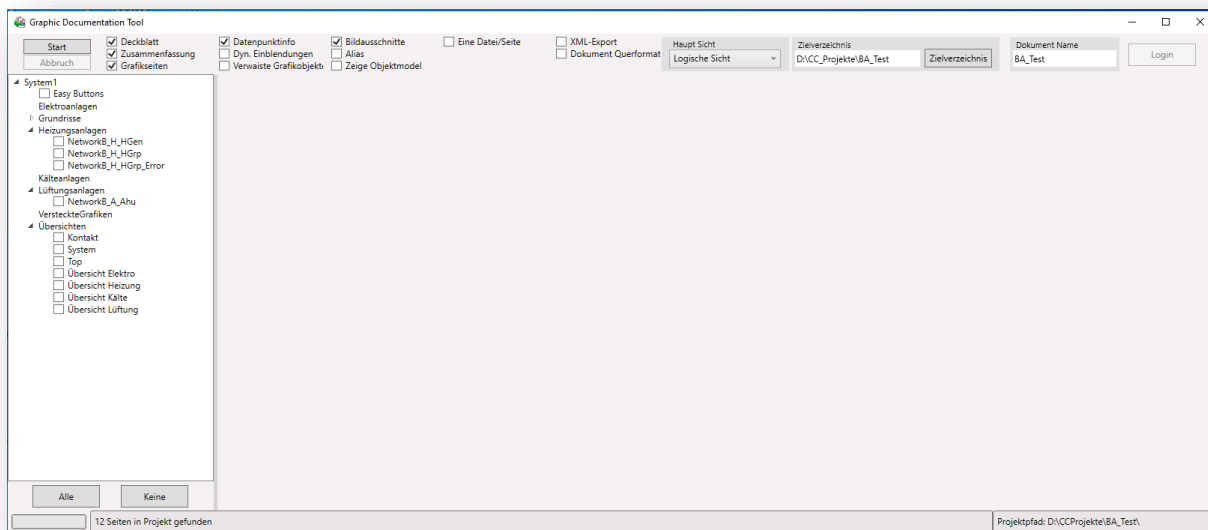


This symbol is suitable for information hints.

Table of contents

1.	Functionality.....	5
1.1	Start.....	6
1.2	Document name and directory	7
1.3	Optionsauswahl.....	8
1.4	Selection of pages	13
1.5	Start.....	14
1.6	Edition	15
2.	Contact.....	17

1. Functionality

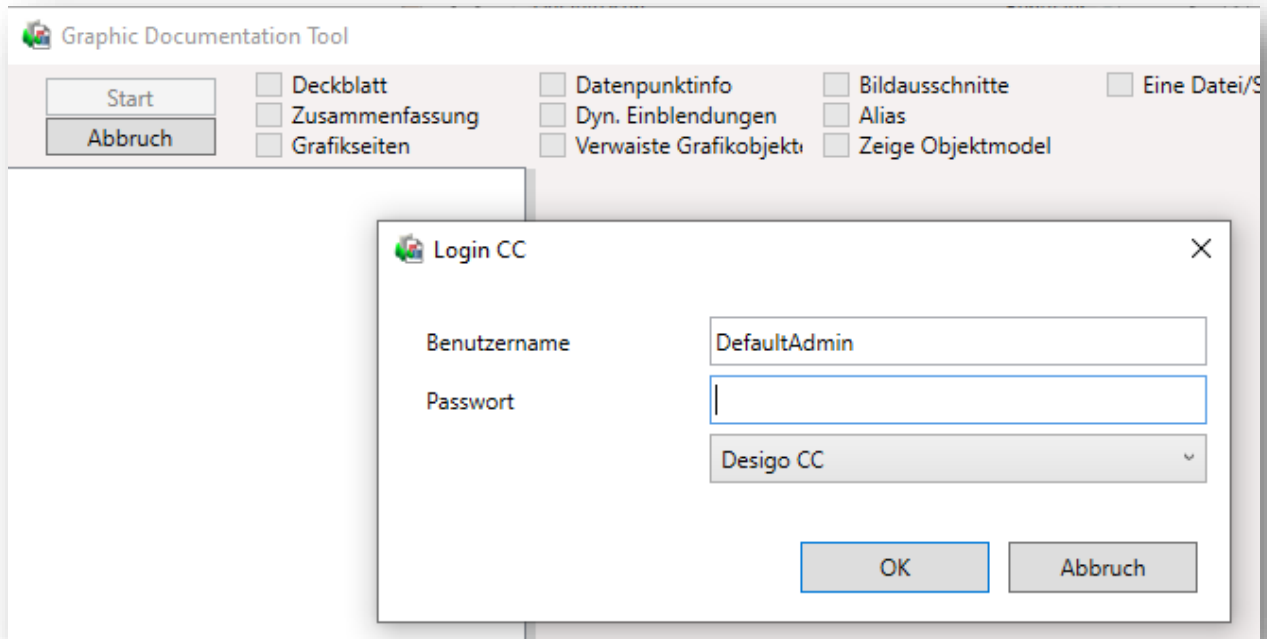


In addition to the individual or overall selection of the graphic pages, the following settings can be made:

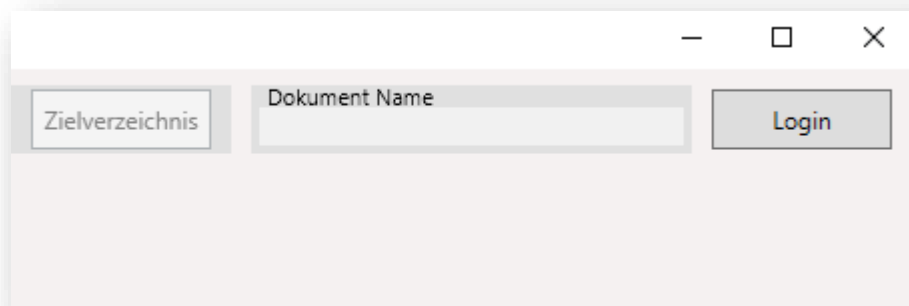
- Main View
- Target directory for the report (path)
- Berichtsname (<name>.pdf)
- Cover page (y/n)
- Summary at the end of the report on all pages/graphs (y/n)
- Graphic pages Screenshot of the graphic (y/n)
- Data point info Display of the DP per graphic with detailed information (y/n)
- Dyn Overlays Data Points with Property (j/n)
- Orphaned graphic objects; Objects that are not in the system in graphics (y/n/)
- Image section Viewport in graphics (y/n)
- Alias/Betreiberbezeichnung (j/n)
- Show object model in data point table (y/n)
- Single or overall report (one file for all graphic pages / one file per graphic page)
- XML Export; creates an XML file with the data point information per page
- Document landscape output in landscape mode (y/n)

1.1 Start

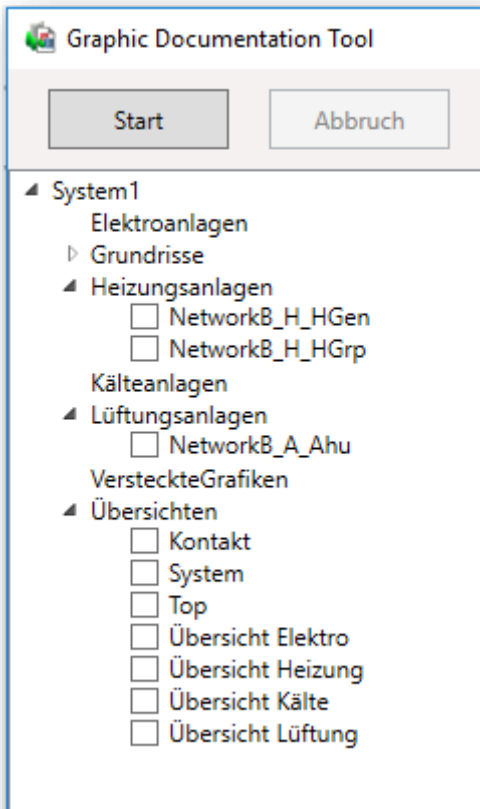
After startup, a user must authenticate to the Desigo CC. If possible, the logged-in user should have access to all data points used.



If the login is cancelled, the login button can be used to reconnect to

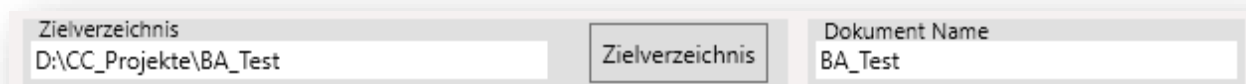


Desigo CC:



Only after successful login are the existing graphic pages of the connected systems displayed:

1.2 Document name and directory



With these two options, the location and the file name (the extension is always . PDF). Depending on the selection of the option "A file/page", further information is appended to the end of the file name.

1.3 Optionsauswahl

<input checked="" type="checkbox"/> Deckblatt	<input checked="" type="checkbox"/> Datenpunktinfo	<input checked="" type="checkbox"/> Bildausschnitte	<input type="checkbox"/> Eine Datei/Seite	<input type="checkbox"/> XML-Export
<input checked="" type="checkbox"/> Zusammenfassung	<input type="checkbox"/> Dyn. Einblendungen	<input type="checkbox"/> Alias		<input type="checkbox"/> Dokument Querformat
<input checked="" type="checkbox"/> Grafikseiten	<input type="checkbox"/> Verwaiste Grafikobjekt	<input type="checkbox"/> Zeige Objektmodel		

Bract:

This option releases the creation of a cover page that contains the project path, system name and creation date:



Summary:

By releasing this option, a summary of the project path, system name, creation time, number of pages in the project, created Pages in the document, total in documentation and number of image sections (ViewPorts) generated.

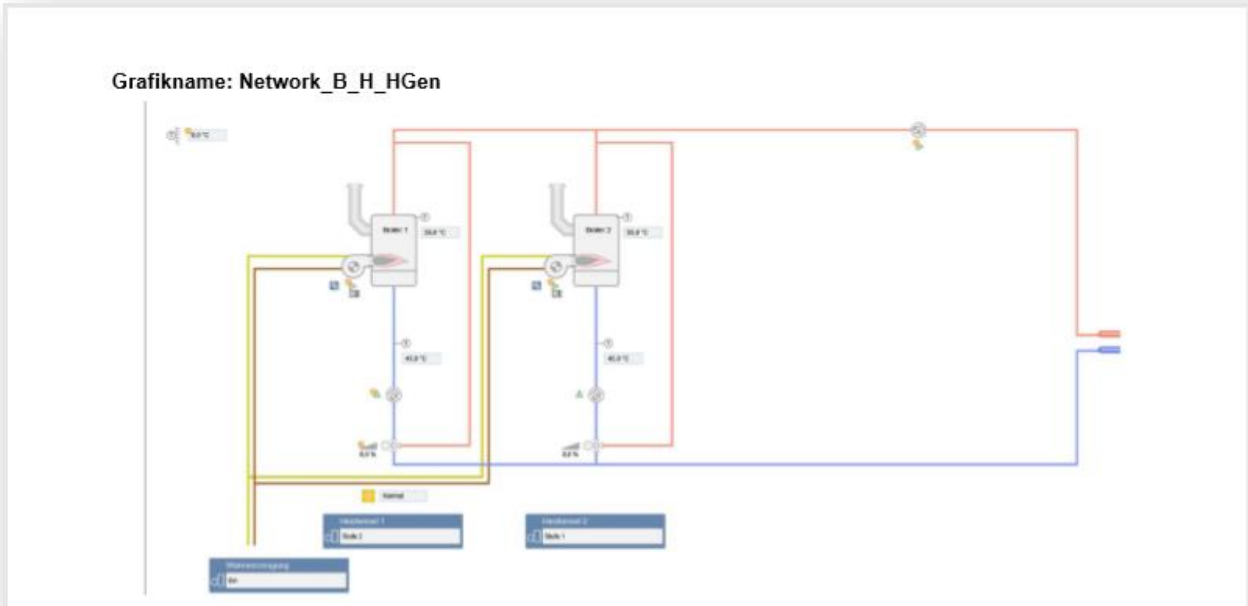


Projektzusammenfassung

Projektpfad:	D:\ICC_Projekte\BA_Test\
Systemname:	System1:
Erzeugt:	27.01.2019 17:44:48
Grafikseiten im Projekt:	10
Grafikseiten im Dokument:	1
Gezählte Datenpunkte:	26
Bildausschnitte (View Ports):	0

Grafikseiten:

By releasing the option, a screenshot of the entire page is inserted into the documentation:



Datenpunktinfo:

By selecting the option, a table can be created that contains the following information by default:

- Data Point Description
- Data point Alias (user name) by selecting the additional option
- Data Point Path
- Data Point Location
- Datenpunkt Objektmodel

Datenpunkte auf Grafik:

DP-Beschreibung	DP-Alias	DP-Path	DP-Obj	DP-ObjModel
Befehl		System1.LogicalView.Logical.Network.B.H.HGen.Bo1.Bu.Cmd.Feedback_Value	System1.LogicalView.LogicalView.Network.Building.Heizung.Wärmeerzeugung.Heizkessel1.Brenner.Befehl	GMS_desigo_px_EOT_BA_PX_MO_10
Brenner		System1.LogicalView.Logical.Network.B.H.HGen.Bo1.Bu.Description	System1.LogicalView.LogicalView.Network.Building.Heizung.Wärmeerzeugung.Heizkessel1.Brenner	GMS_desigo_px_EOT_BA_PX_Block_10
Fehler Bu 1		System1.LogicalView.Logical.Network.B.H.HGen.Bo1.Bu.Err.Status_Flag	System1.LogicalView.LogicalView.Network.Building.Heizung.Wärmeerzeugung.Heizkessel1.Brenner.Fehler.Bu.1	GMS_desigo_px_EOT_BA_PX_BI_10
Befehl		System1.LogicalView.Logical.Network.B.H.HGen.Bo1.Bu.Cmd.Feedback_Value	System1.LogicalView.LogicalView.Network.Building.Heizung.Wärmeerzeugung.Heizkessel1.Brenner.Befehl	GMS_desigo_px_EOT_BA_PX_MO_10
Befehl		System1.LogicalView.Logical.Network.B.H.HGen.Bo1.Pu.Cmd.Current_Priority	System1.LogicalView.LogicalView.Network.Building.Heizung.Wärmeerzeugung.Heizkessel1.Pumpe.Befehl	GMS_desigo_px_EOT_BA_PX_BO_10
Befehl		System1.LogicalView.Logical.Network.B.H.HGen.Bo1.Bu.Cmd.Feedback_Value	System1.LogicalView.LogicalView.Network.Building.Heizung.Wärmeerzeugung.Heizkessel1.Pumpe.Befehl	GMS_desigo_px_EOT_BA_PX_MO_10
Fehler Bu 1		System1.LogicalView.Logical.Network.B.H.HGen.Bo1.Bu.Err.Present_Value	System1.LogicalView.LogicalView.Network.Building.Heizung.Wärmeerzeugung.Heizkessel1.Brenner.Fehler.Bu.1	GMS_desigo_px_EOT_BA_PX_BI_10
Befehl		System1.LogicalView.Logical.Network.B.H.HGen.Bo1.Bu.Cmd.Present_Value	System1.LogicalView.LogicalView.Network.Building.Heizung.Wärmeerzeugung.Heizkessel1.Brenner.Befehl	GMS_desigo_px_EOT_BA_PX_MO_10

Dyn. Advertisement

In addition to the data points, the properties of these are also counted, if they were used in the image. If the data point or property is used multiple times in the image, only one overlay is counted.

Alias:

This selection adds the alias of the data point to the data point table, if it exists.

Show object model:

this selection represents an additional column for the assigned object model

Orphaned objects:

List of objects that are present in the graphic but not in the system.

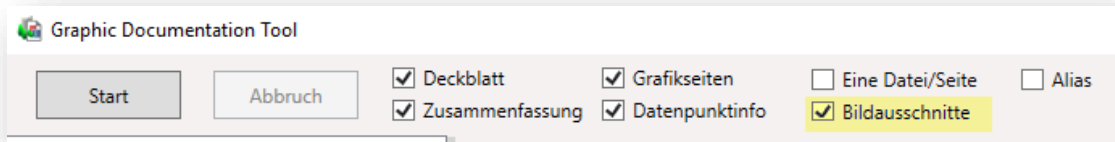
DP-Pfad
System1.LogicalView.Logical.Network.B.H.HGrp.MxCrt.Pu;@Sta
System1.LogicalView.Logical.Network.B.H.HGrp3.MxCrt.TRT;
System1.LogicalView.Logical.Network.B1.H.HGrp.MxCrt.Vlv;
System2.LogicalView.Logical.Network.B.H.HGrp.MxCrt.TFI;

A page/file:

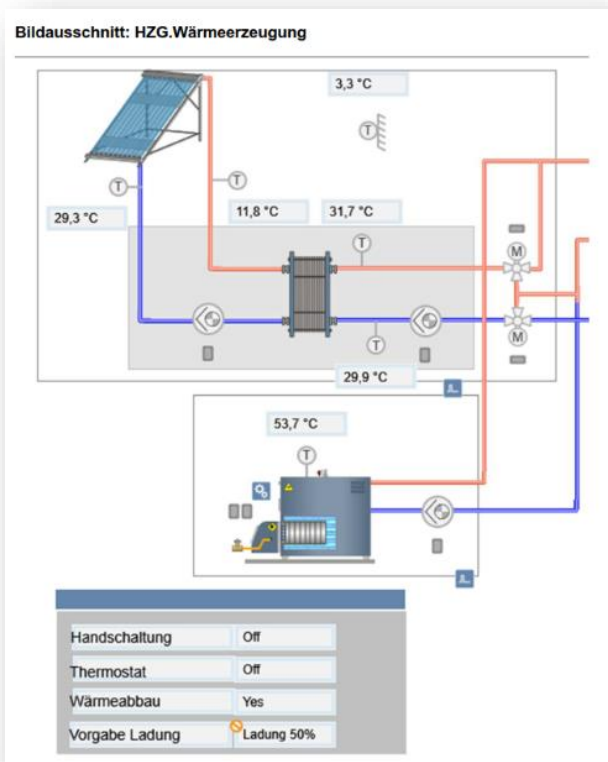
This option creates a separate PDF file for each graphic page. This can be helpful if subsequently generated pages have to be documented.

Counting of image sections

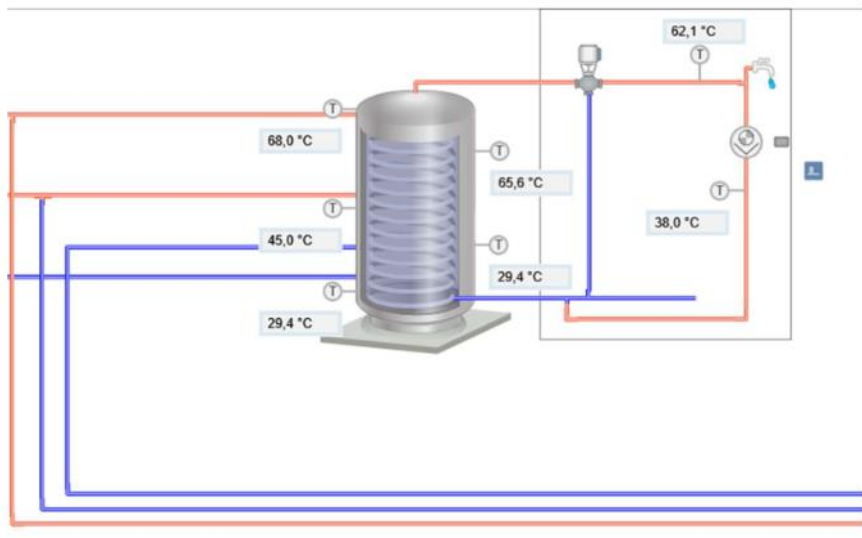
Intelligent counting of image sections, i.e. only image sections that differ from the page size are counted (± 50 image units)



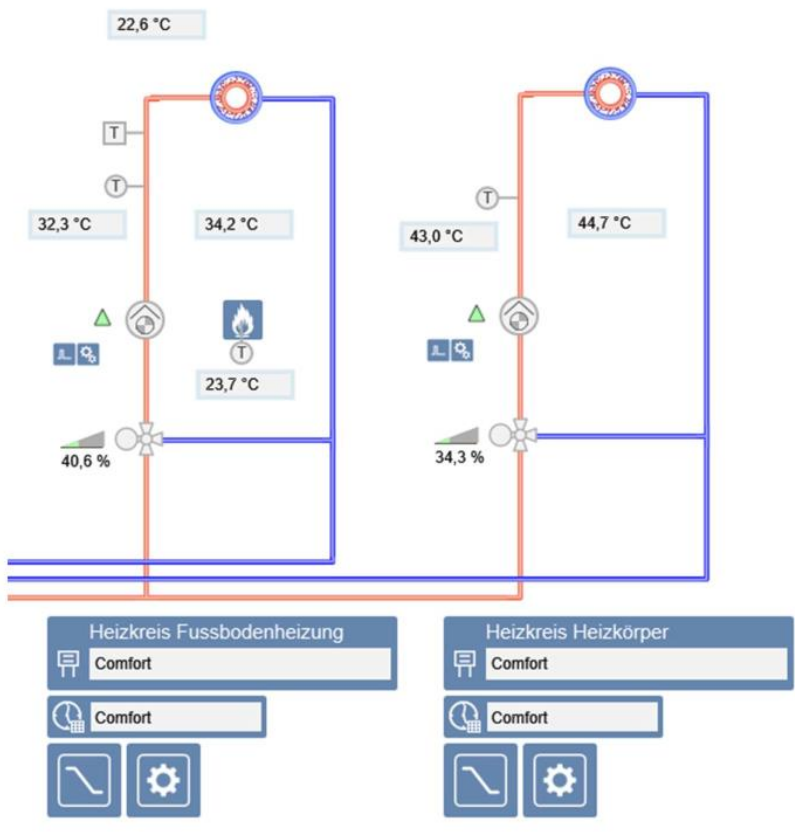
Presentation of the image sections on this page:



Bildausschnitt: HZG.Speicher



Bildausschnitt: HZG.Heizkreise



XML-Export:

With this option, an XML file with the information from the Table Data Point Info is also stored in the target directory for each page. The file name corresponds to the image name including structure and system.

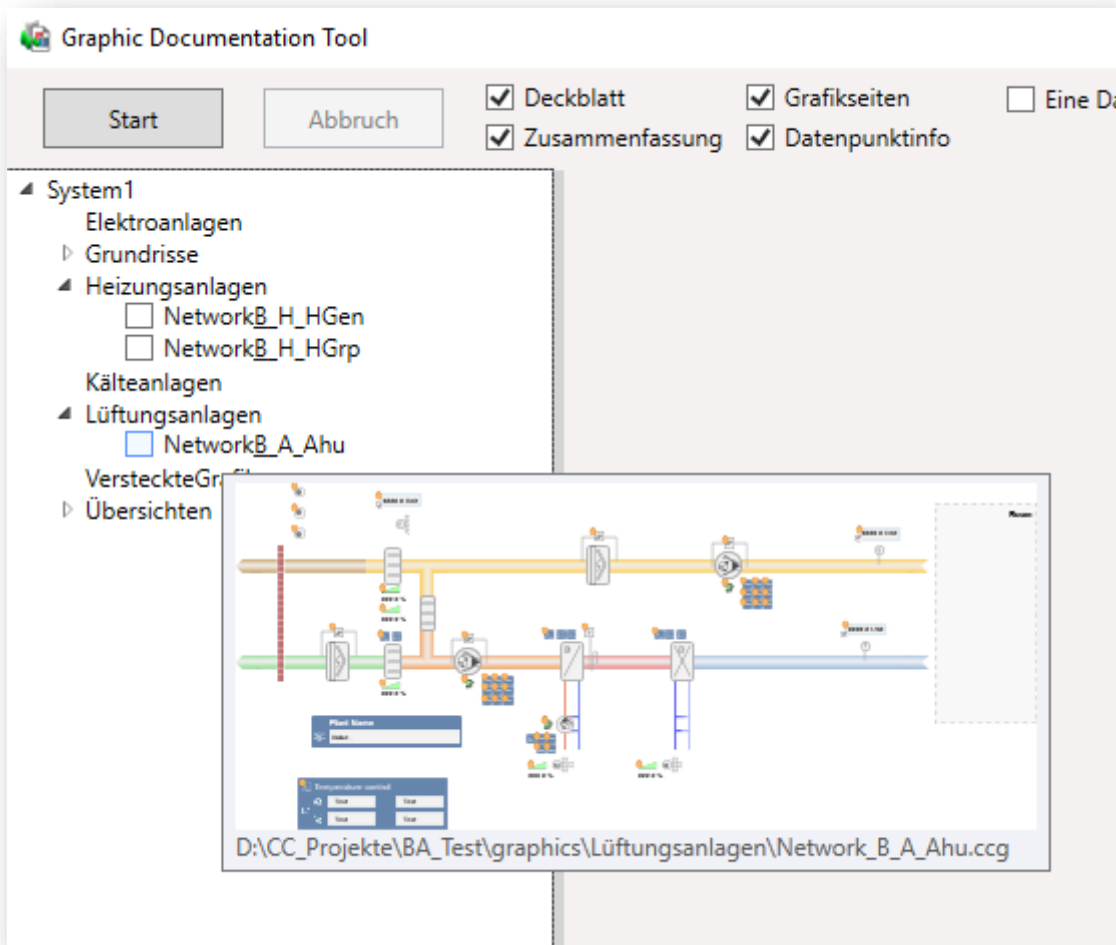
Document Landscape:

The pages of the PDF output are saved in landscape mode.

1.4 Selection of pages

In the tree structure, a page can now be selected directly with the mouse. If the mouse is placed on the node of the page, a tooltip appears in the form of a preview of the page.

With the buttons below the tree structure, "All" or "None" page can be selected with one click.



In addition, the keyboard shortcuts are available

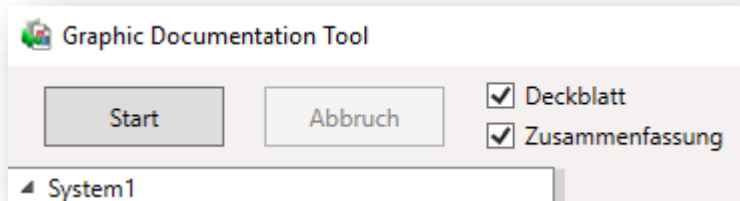
Ctrl + Click = to select an entire branch

Strg + Shift + Click = for the deselection of an entire branch

Available.

1.5 Start

After the selection and start of the report, the report is created and saved according to the selection and report name in the target directory. The creation can be made at any time with the button „Demolition“ be stopped.

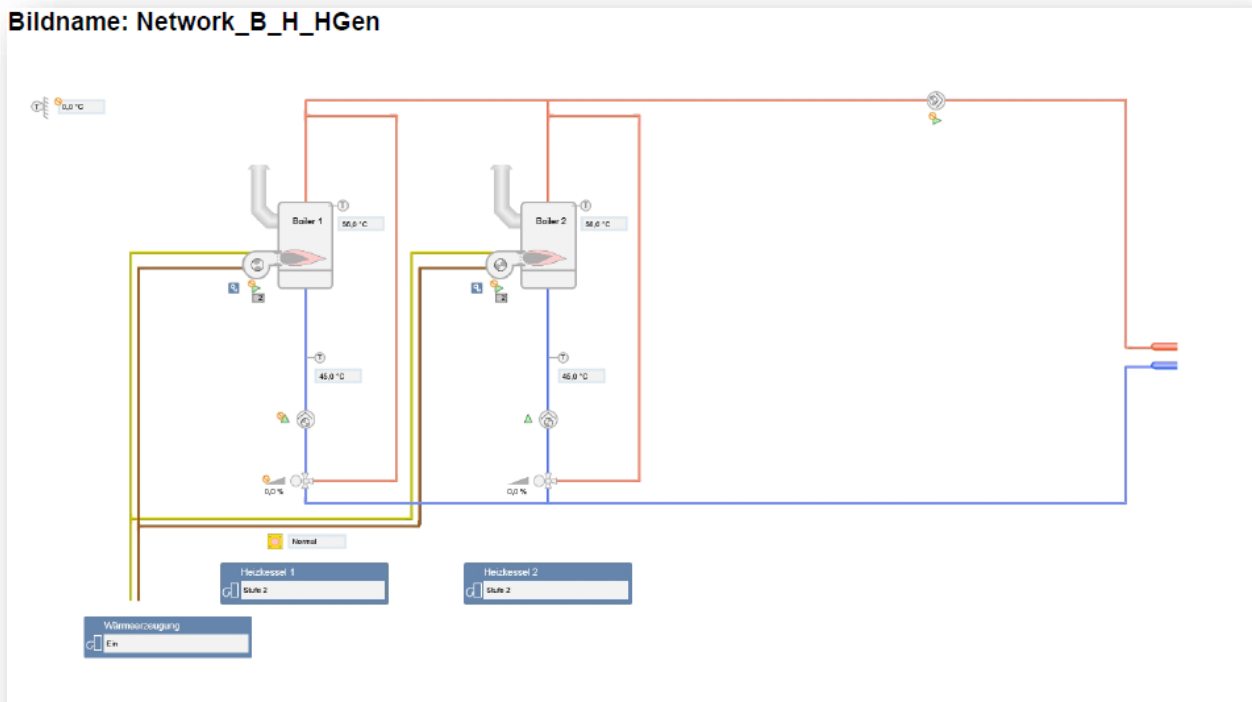


Test runs of real projects have shown that with a volume of about 200 graphic pages, the report creation is completed in about 20 minutes.

1.6 Edition

The following illustration shows a page of the report with graphics and data points (page excerpt).

Bildname: Network_B_H_HGen



Datenpunkte in Anlagengrafik:

DP-Text	DP-Pfad	DP-Beschreibung
Brenner	System1.LogicalView:Logical.Network.B.H.HGen.Bo1.Bu	System1.Logische Sicht:Logische Sicht.Network.Gebäude.Heizung .Wärmeerzeugung .Heizkessel 1 .Brenner
Befehl	System1.LogicalView:Logical.Network.B.H.HGen.Bo1.Bu.Cmd	System1.Logische Sicht:Logische Sicht.Network.Gebäude.Heizung .Wärmeerzeugung .Heizkessel 1 .Brenner .Befehl
Fehler Bu 1	System1.LogicalView:Logical.Network.B.H.HGen.Bo1.Bu.Er	System1.Logische Sicht:Logische Sicht.Network.Gebäude.Heizung .Wärmeerzeugung .Heizkessel 1 .Brenner .Fehler Bu 1
Befehl	System1.LogicalView:Logical.Network.B.H.HGen.Bo1.Pu.Cmd	System1.Logische Sicht:Logische Sicht.Network.Gebäude.Heizung .Wärmeerzeugung .Heizkessel 1 .Pumpe .Befehl
Heizkesseltemperatur	System1.LogicalView:Logical.Network.B.H.HGen.Bo1.TBo	System1.Logische Sicht:Logische Sicht.Network.Gebäude.Heizung .Wärmeerzeugung .Heizkessel 1 .Heizkesseltemperatur
Pumpe	System1.LogicalView:Logical.Network.B.H.HGen.Bo1.Pu	System1.Logische Sicht:Logische Sicht.Network.Gebäude.Heizung .

The following excerpt shows the summary of the graphic shown above (Seitenausschnitt).

Grafikseitenzusammenfassung

Datenpunkte auf Grafik:	61
Bildausschnitte (View Ports):	3
Systemname:	System1
Grafikname:	HZG
Bildgröße Breite / Höhe:	1.930 / 665
Seitenpfad:	System1:Graphics\Heizungsanlagen\HZG.ccg

The following illustration shows the summary of the entire project at the end of the report.

Projektzusammenfassung


Projektpfad:	D:\CC_Projekte\DHH_Compact\
Systemname:	System1:
Erzeugt:	05.02.2019 07:30:24
Grafikseiten im Projekt:	10
Grafikseiten im Dokument:	1
Gezählte Datenpunkte:	61
Bildausschnitte (View Ports):	3


2. Contact

Peter Schaefer

Center of Competence Solution
Support Desigo CC

Siemens AG
Siemens Germany
Smart Infrastructure
RC-DE SI RSS-DE SSP COC-SOL

 +49 89 9221 5675

 peter.a.schaefer@siemens.com

Smart Infrastructure connects intelligently
Energy systems, buildings and industries to
how we live and work, develop and
to improve.

Together with our customers and partners, we create
an ecosystem that intuitively responds to people's needs
reacts and supports customers in optimal resources
to use.

An ecosystem that helps our customers grow,
that promotes the progress of communities and a
sustainable development.

Creating environments that care.
[siemens.de/smart-infrastructure](https://www.siemens.de/smart-infrastructure)

Editor:
Siemens AG

Smart Infrastructure
Center of Competence Solution
Lyoner Strasse 27
60528 Frankfurt am Main, Germany

© Siemens 2021

Changes and errors excepted. The information in this document
contain only general descriptions or features, which
in the specific application not always apply in the form described
or which may change due to further development of the products.
The desired performance characteristics are only binding if they are
Conclusion of contract is expressly agreed.